

★ Alpine Sun ★

"Best climate in US by Government report."

VOL. 10, NO. 22, (244) ALPINE, CALIF. FRIDAY, SEPT. 29, 1961 10¢

Ground Breaking for Water!

Home Financing Now

Hundreds attended the opening and inspected models at Basic Homes, Inc., 10085 Hwy 80, according to Walt Ridenour, president. Here many were surprised to learn that no

WELLS GO DRY AS WORK ON PIPELINES STARTED!

Nature seems to be giving Alpiners a final dig in the form of a faster lowering water table, making dozens of wells dry! But people are feeling better every day as Rio



GROUND BREAKING WAS BY SIX STALWART DIRECTORS OF RIO, FROM LEFT: CHAS. C. PRICE, GENERAL MANAGER; DIRECTORS JONAS PUMPHREY, AL ADAMS, G.R. RIBLEY, H.S. RAKOWSKI AND B. W. WALKER, PRESIDENT.

SD MWD releases news on progress of installing reservoirs, pumps and pipelines, work having started Sept. 15.

As the Sun photo shows, ground-breaking ceremonies were held for the Mt. Top reservoir last week, with some 50 present as directors pushed their golden shovels into the earth.

Today's critical situation is the result of a

down payment is required if the buyer owns his land. Also, that it is possible to get complete financing up to 12 years and then own the home free and clear

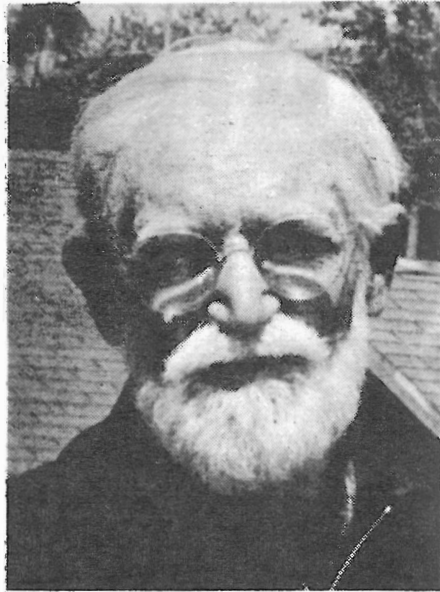
MORE ON PAGE 18

MORE ON PAGE 18

PERCY FOSS

Services were held yesterday at 2 in Community Church for Percy Foss, 86, who died suddenly Friday in Mallicoat Nursing home after but a few hours illness. Dr. Roger Larson conducted the service. Burial was in Alpine Cemetery.

Foss was born in Mass., came here when only four and the rest of his family was born in Alpine, of which two brothers survive, Robert, of Escondido, who came here for the funeral, and Joseph, who is still



FOSS, LIVED HERE 82 YEARS. SUN PHOTO WAS LAST MADE OF NOTED PIONEER.

EL CAJON THEATRE

Hickory 4-3272

NOW THRU TUESDAY
 MARLON BRANDO
 KARL MALDEN
 'ONE EYED JACKS'
 RICHARD WIDMARK
 'SECRET WAYS'
 COMING SOON
 PARRISH, NIKKI
 EXODUS
 GUNS OF NAVARRONE

AERO DRIVE-IN

BOSTONIA HI4-8800

NOW THRU TUESDAY
 VINCENT PRICE
 JOHN KERR
 'PIT & PENDULUM'
 MADELINE FISHER
 PAUL HUBSCHMID
 'DAY THE SKY EXPLODES'

SWAP MEET EVERY SAT. & SUN
 9 to 5, 35¢ a car.

WE GIVE
S.H.
 GREEN
 STAMPS

WATCH FOR

Red Tag Week! Giant Savings.

Alpine Hardware & Dept. Store

HI5-2406

P.O. Box 118

2218 Hwy 80

in the hospital. He was unmarried.

In 1894 he was an organizer and charter member of Community Church, later became an honorary member of the cabinet, which he attended until two years ago. On Sunday, July 2, he broke ground for the new church educational building, (Sun July 7). He was the last charter member.

It was in the Edward A. Foss home, just off Foss Rd., where in 1880 Alpine's first tiny school started, with their children attending. Foss still lived there with his sister Pearl, who died last year. The area was known as Tule Springs, their home being built in 1874.

They said it couldn't be done...

●BIG●

IEH

HOMES

BUILT ANYWHERE

BIG IEH HOMES
as little as

\$ 40⁰⁰

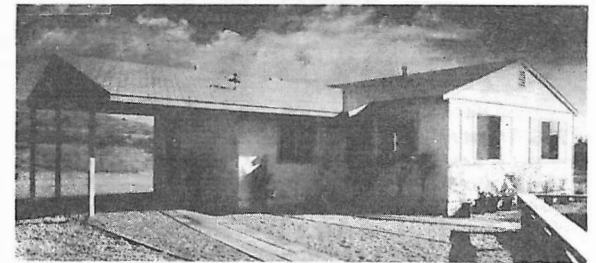
per month

NO DOWN!

100% Loan on your land!

INSTITUTE PROVIDES NATION'S ONLY COMPLETE BUILDING AND FINANCING SERVICE!

IEH HOMES are custom built from the ground up by established locally owned building concerns under the supervision of the Institute for Essential Housing. Will build anywhere as desired!



VARIOUS STAGES OF COMPLETION TO FIT YOUR POCKETBOOK!

Semi-finished stages allow the "do-it-yourselfers" to complete the home and in many cases double and triple the home value. The completely finished stage is less than monthly rent!

See Model Home Display
 BASIC HOMES
 10085 Hwy 80-EI Cajon
 Phone HI 2-0811

THE INSTITUTE FOR ESSENTIAL HOUSING
 C/O BASIC HOMES INC.
 10085 HIGHWAY 80
 P.O. BOX 2385, BOSTONIA STATION
 EL CAJON, CALIFORNIA

- PLEASE HAVE YOUR HOME REPRESENTATIVE CALL WITH PICTURES AND FLOOR PLANS.
- MAIL FREE COLOR BROCHURE.
- WE ARE INTERESTED IN HAVING A HOME FOR
 - RETIREMENT
 - VACATION
 - OTHER
- WE NOW OWN LAND. WE NOW OWN LAND FREE AND CLEAR.

IT IS UNDERSTOOD THAT WE ARE UNDER NO OBLIGATION.

NAME

STREET

CITYPHONE

EDITORIAL

Drugs May Cause Heart Attacks in Young

Atherosclerosis-- hardening of the arteries-- that makes the heart work extra hard to supply the body with blood, is believed to be increasing among the young. Heretofore it was found usually among the aging, scientists have discovered. They believe that modern, life-saving drugs may be tied in with start of this ailment. It can cause heart attacks.

A sulfa drug injected into rabbits caused inflammation in the vessel walls. When healed, they thickened and became atherosclerotic. Chicago's Dr. Otto Saphir of Michael Reese Medical Center, believes this should be investigated further as certain drugs may cause similar reactions in over-sensitive humans.

This would help to ex-

plain the rise in the last 20 years of this trouble in those under 40, where heart attacks have taken a heavy toll. Most researchers believe that the condition comes from an accumulation of cholesterol, a blood fat that a part of modern everyday diet.

Moral of this scientific belief is to cut out fats and hydrogenated oils and eat generally less fatty items. However avocados have been found to help, rather than cause this trouble, as the Sun has observed previously.

Fashion Show Oct. 10

Alpine Women's Club is presenting a fashion show Oct. 10th at 12:30 pm in the club house. It is a potluck, donation is \$1. Cele's of EC will present the latest in fall and winter fashions.

Models are: Mmes. Marcus Schaeffer, Knut Svensson, Myron Smith, Ed Nixon, B. McKaskle, H. Vehnam and Auren Pierce.

Mrs. W. San soucie, publicity chairman, asks that everyone attending 'please bring own table service'. There will be two door prizes.

ALPINE NEEDS A VETERINARIAN

ALPINE SUN

America's Tiniest Newspaper



HICKORY 5-2415 OR 2394

2255 Tavern Rd. Mail Rt. 1, Box 189

ALPINE, SAN DIEGO COUNTY, CALIFORNIA

PUBLISHED SEMI-MONTHLY ON FRIDAY
10¢ PER COPY, BY MAIL, \$2. YEARLY

CLARKE IRVINE, EDITOR & PUBLISHER
AOPA 194347

ALICE IRVINE, ART & COMPOSITION
OWNED BY HEALTH DEFENSE LEAGUE INC.

PRINTED AND PRODUCED ENTIRELY ON THE RANCH

All paid. Second class mail privileges authorized at Alpine, California.

EST. JAN 1952. ADJUDGED FOR LEGAL ADS ON
11-12-59. IN SUPERIOR COURT, NO. 238120.

FLORENCE'S MARKET

Owned & Operated by Florence Clarke

Groceries - Meat - Fresh Vegetables - Liquor

2262 Highway 80

Hickory 5-2436

Alpine



Have your stereo but KEEP YOUR SAVINGS INTACT! Your Security Bank savings account, used as collateral, can lower the cost of borrowing money for anything from stereo to sterling. Because your savings continue to earn full bank interest daily, your net interest cost is cut to a minimum. Then when you've repaid your bankbook loan, your savings are still intact! Ask about this attractive plan at your nearby

FREE BOOKLET

Ask for your free copy of the helpful new Family Money Management booklet that explains bankbook loans in detail.

SECURITY FIRST NATIONAL BANK

Corner Main and Orange, El Cajon
Corner of Second and Peach Avenue, El Cajon

Motel is Reopened

Tappy's Motel, 2337 Hwy 80, opposite Peacock Ranch, which was taken back some months ago by the original owner, Mrs. Katherine Black, is now fully reopened and filled most of the time with many permanent guests.

Mrs. Black has spent over \$16,000 in improvements, painting, wall-to-wall carpet and attractive decorating in modern hues with new furniture and many other features. The old eucalyptus in front were removed, adding to the light and safety.

'We have also added cleaning service for monthly tenants,' says Mrs. Black, the former Mrs. Tappmeyer, from which she derived the short name of Tappy, which she and her late former husband operated. It is one of today's finest motels along Hwy 80.

Youth Group Formed

Tonight election of officers will be made for a new youth club here, following a first session last week when volunteers came forward to promote the project.

Mrs. Helen Sanville is advisor on parties and entertainment; Ted Barton, financial, logistics, etc.; Leroy Dandridge, advisor for boys, outdoor projects, with Chuck Paddock, assistant. Bert Fuller will aid Barton.

Cliff Wooldridge is offering temporary club quarters and his wife Marion will assist Mrs. Sanville. John Bilsky is liason man for entire group. Dick and Dot Ellis were there from the Canyon, Bill Shipley from Descanso and Don Perkins, Karel Dayteen and Mr. and Mrs. John Campbell. Tonight they will select a name, elect, also establish purpose and write bylaws.

Alpine Cafe has changed its closed day from Monday to Wednesday, reports Mart Hazell, owner, and 'due to the hunting season, we're open from 6 am', he says.

WE NEED LISTINGS

ALPINE BRANCH

LA MESA REALTY CO.

BILL BROWN, Mgr.

2237 HWY 80

H15-3603

Now is the Time to--

HAVE YOUR

**Sweaters & Other WOOLENS
EXPERTLY CLEANED**

For

back to school!

**Free Pickup & Delivery
Cleaning, Pressing & Finished Laundry**

2223 HWY 80

Alpine Cleaners

H15-2242



PREMIER SHOWING

FRIDAY AT



CHEVROLET FOR

1962

See one of San Diego's most complete displays

CHEVROLETS

Impalas, Biscaynes, Bel-Airs. Featuring fresh new styling and dozens of engineering refinements. Wagons, two and four door Sedans, Hardtops and Convertibles.

CORVAIRS

including the Monza with many more luxury features and styling improvements.

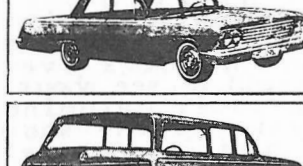
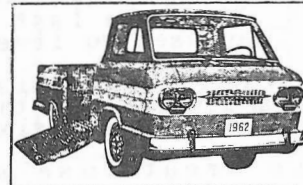
TRUCKS

America's most complete and largest selling line — featuring new power, new styling, new visibility. Step-sides and Fleet-sides. Great for '62.

... AND INTRODUCING THE ALL-NEW 1962

CHEVY II

Completely new from the ground up... new size, new economy, new styling... the most practical car ever built for Mr. and Mrs. America.

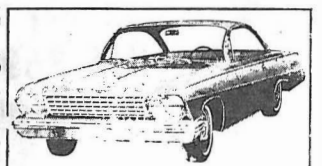
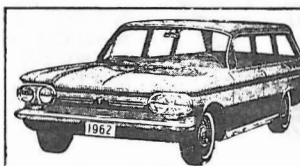


THE-LOWEST-OVERHEAD-COST-PER-CAR-DEALER-OF-THEM-ALL



850 EL CAJON BLVD.
City of El Cajon
Phone HI 4-1105

Open Evenings
Closed Sunday
(In San Diego)



Small Talk

By Cynthia Irvine
Age 13, 8th Grade

I had another post card from Mary Alice Manning. This time it came from Florida. She said she was going to visit Cape Canaveral and the Capitol and a lot of other places before she comes home. She really has been seeing the United States this past summer.

Mary Eva Fitzgerald got back last week from her trip to Cleveland and Pittsburgh. Her mother went to the airport and picked her up Monday.

I just heard last week that Mike and Timmy Webb's grandma died. She had an operation in February and everyone thought she was ok but guess she wasn't.

Saturday while we were out riding we went down by Susan Whipple's to say hello and her little sister Christina came out. She is a lot better from her fall down the canyon but still has her arm in a cast and her foot bandaged, but she can walk.

Elaine Earickson went to the Pomona Fair over last week-end and had a nice trip.

Wanda Naylor's birthday was last Friday. She moved into the apartment over

at Peacock Ranch just the week before school opened. She has two sisters, Gilda, 13, and a baby sister, Matilee, 2, and one little brother Richard. They moved here from Jacumba and like it a lot.

Mike McCoy finally got the cast off his foot and he was glad of that.

Robert Pace and his little brother moved to Richmond, Virginia last Monday. They used to live at Ball's Ranch.

Stephen Huff broke his left arm and will have to have it in a cast for six weeks.

Dickie Greathouse's pigeon is sitting on one egg so he will have a baby one in a few days.

Mary Hale was on the teeter totter down at Harbison Canyon School last week and when her friend jumped off she came down with a bang and fractured her ankle. She had to have it in a cast. Sandy Walker did the same thing last year only she had a compound fracture and couldn't do much playing this summer on account of it.

Susan Whipple and her Dad and brother Joe went up to Los Angeles over last week-end to see about entering their palomino mare Gypsie in the show they are having up there.

Melody Gates is looking for a nice horse to buy. She is 11 and her grandma is Mrs. Sturdivant. Melody used to live up here when she was real little but now lives in EC.

We were all over to the Jolly Kone snack bar Sunday and Mrs. Bittner told us the hitching post would be put up this week. We will be glad to have a nice place to tie our horses.

Dwayne Romaine was really lucky last week. Mrs. Fox of Shadyrock Ranch offered \$10. as a reward for finding their pet black poodle Kiki. Dwayne saw him on the

MORE ON PAGE 13



FLORENCE JONES, NEW ALPINE LIBRARIAN WHO TOOK OVER FROM MRS. LILLIAN OLIVER ON SEPT. 16. SHE LIVES UP ON HWY 80. LIKES THE WORK, HAS BEEN SUBSTITUTE BEFORE, IS HAPPY TO SERVE THE COMMUNITY. LIBRARY IS OPEN TUESDAY AND THURSDAY, 1 TO 5, SATURDAY, 10 TO 2.

Stan Wilson, son of the Gordon Wilsons, has been called back to the active list, USMC, and is going to weekly training exercises at Camp Pendleton. With his family he lives in Clairemont, formerly of Alpine.

Antiques
And Gifts

Carriage Trade

2549 Hwy 80 - Alpine - H15-2822

Take my word for it!
Electric cooking is

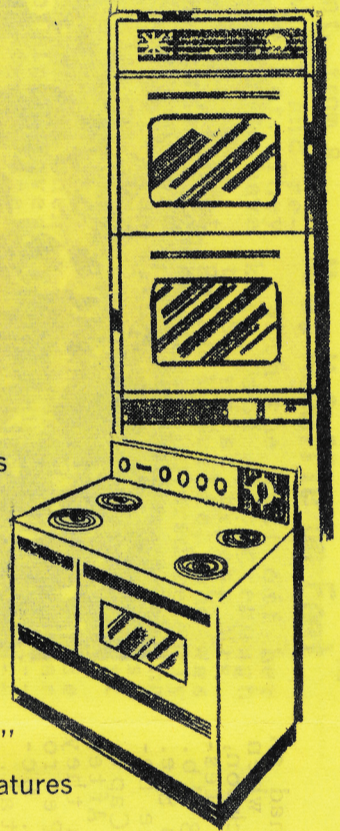


May Means -

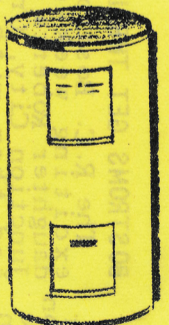
Home Economist for San Diego Gas & Electric Company — reports that many homemakers consider automatic controls the number-one advantage of modern electric cooking.

"Good cooks appreciate the absolute accuracy and dependability of new electric ranges. Everybody likes the ease and convenience of the set-and-forget timing devices and you can count on consistently good results — automatically."

Automatic controls are just one of many exciting features offered by modern electric ranges. Electric cooking is economical, clean, fast and easy. See your dealer today. Choose a beautiful electric range, either free-standing or built-in. Cook better . . . live better . . . electrically!



And take Reddy Kilowatt's word for it! An automatic electric water heater is an economical companion to a modern electric range. Your whole family will enjoy having an abundance of clean, hot water — heated the modern electrical way.



SAN DIEGO GAS & ELECTRIC COMPANY



Wilson in Hospital

Recovering from a major abdominal operation, Gordon Wilson, 74, of South Grade Road, is expected home in a few days, reports his wife. Fortunately the tumor was not malignant and he is doing well, being in top physical condition. Wilson is a retired grocer.

Mrs. Clara Everson, Hillcrest Road is back by jet from a six week's visit to Michigan where she visited relatives.

BOSTROMS GET THRILLS

The R.C. Bostroms had an exciting week-end when daughter Roberta Erickson, Junction City, Ore., blessed them with an 8 lb. 14 oz. girl, Rebecca Sue. The week-end Marcine became the bride of Capt. Edwin Grubbs, USMC. After a month's honeymoon they will live in San Pedro where he is at Ft. McArthur Army Hospital.

St. Philomena Church has just been renamed Queen of Angels. The St. Mary's group met for their first meeting of the year at the home of Mrs. Charlene Brown in Alpine Highlands Thursday. A business meeting was held after which a social hour was enjoyed and refreshments served. Ten were present.

M/Sgt. Betty Noble, former Alpine girl and daughter of Mrs. Dorothy Walker Markley, who spends about half her time here, has been transferred from duty with the Women Marines in SD, to Honolulu for two years. Her sister, Capt. Sue Noble, is back from Japan, stationed at Mather, near Sacramento.

Mrs. Bert Fuller, reports her husband, is still in Naval Hospital for checks and tests.



How to Report Fires

Bob Fey, in charge at Alpine fire station, relates how someone the other day reported a fire to the forestry office which had to relay it to Alpine.

When there is a fire here, dial HI5-2343, the local number, which is used exclusively for reporting fires. You may save much time.

Funfest Tomorrow

The Fall Funfestival by the Parents' Auxiliary of Troop 105 and Pack 350 slated for tomorrow night at the YC will feature a real caliope, Scottish bagpipers and dancers, Indian dances and an accordion band with gunslingers on the side! There will be booths and dancing, the fun starting at 5 pm, says Mrs. Mary Way. The public is invited.

Mrs. Harold Johnson, Victoria Drive, is recovering from recent minor surgery.

WATER LEADERS WERE ON HAND WHEN GROUND WAS BROKEN FOR RESERVOIR IN NEW RIO SD MWD DISTRICT THAT INCLUDES ALPINE. THIS WAS ON ROAD BETWEEN THE CANYON AND SUNCREST, WILL HOLD 23 MILLION GALLONS. HERE FRED HEILBRON, HEAD OF SD COUNTY WATER AUTHORITY IS MAKING A SPEECH. HE IS TALL MAN IN GROUP FACING CAMERA.

John Romaine, 1865 South Grade Road, was saved putting in another well when his went dry. His neighbor across the way, Carl McCall loaned him one of his.

HILLTOP INN

Hamburgers & Chili

Featuring
Hilltop Hound

Something Different,
Something Tasty

BEER

Open 10 to 2

Birthday Parties And
Anniversaries

Friendly Atmosphere

1332 La Cresta Blvd. HI4-9983

Water Wells PUMPS

SALES SERVICE

Water Wells Drilled

STOCKTON PUMP & MACHINE

311 N. 2nd, El Cajon, HI4-2672

TRY A REAL TREAT

Corned Beef & Cabbage

or

Corned Beef Sandwich on Rye

YOU WILL BE SURPRISED HOW TASTY IT IS. DAILY EXCEPT

CLOSED WED. OPEN 6 A.M.

ALPINE CAFE

2225 Hwy 80

HI5-9596

General Contractor

REAL ESTATE - DEVELOPMENT

RELCO

HI5-2631 - HI5-2632

2335 Hwy 80

Alpine

Alpine Weather Records

Climate, Temperature and Rainfall

Prepared by C. Robert Elford

Weather Bureau Office, San Francisco, California.



Presented as a Public Service by the Alpine Sun

CLIMATE OF ALPINE, CALIFORNIA

Alpine is about 25 miles from the ocean in hilly country sloping gradually upward to the east. The elevation ranges from around 1400 to 2000 feet. In July, 1959, for example, Viejas Mountain, 4224 feet, rises about 5 miles northeast of the city. The crest of the mountains, around 6000 feet, is 15 to 20 miles farther east. El Capitan reservoir is about 5 miles northwest and 1000 feet lower.

The southerly latitude of Alpine, combined with its relative proximity to the ocean, results in an equable temperature regime. The average maximum during July, the warmest month, is just over 90°, while the average minimum during January, the coldest month is about 37°. High temperatures during the summer, however, occasionally reach well above 100°, a record 110° having been recorded in September, 1955. Even in winter it is possible to have maximums in the 80s. Readings of 90° or higher have been recorded 60 days per year, on the average. The minimum has dropped to as low as 18° in January of 1937, and sub-freezing temperatures have been reported at one time or another during each month from October through April. On the average there are 27 days per year with temperatures of 32° or below. There have been occasions when extreme temperature conditions have persisted for long periods. In July, 1959, for example, the maximum reached 90° or higher on 28 days. At the other extreme was January, 1937, when freezing temperatures were recorded on 22 days.

The average annual precipitation amounts to 19.82 inches, but only 0.38 inch of this falls during the months of June, July, and August. More than 16 inches falls from December through April. A total of more than 6 inches of rainfall in a 24-hour period has been reported. This fell within a 13-hour period, and consideration of other available data indicates that amounts up to 7.50 inches in 24 hours might be expected as often as once in 100 years. Snow is infrequent, although it has been reported on several occasions. Hail falls at times in connection with thundershowers.

Clear skies are the rule during much of the year. Averages show about 254 days to be clear, 51 partly cloudy, and only 60 cloudy.

While relative humidity records are not available, a study of other nearby reports would suggest that readings

Please see back page.

CLIMATOLOGICAL SUMMARY

STATION Alpine, California.

LATITUDE 32° 50' N
LONGITUDE 116° 47' W
ELEV. (GROUND) 1735 feet

MEANS AND EXTREMES FOR PERIOD 1935-1945, 1952-1959

Month	Temperature (°F)				Mean degree days	Precipitation Totals (Inches)						Mean number of days									
	Means		Extremes			Year	Mean	Maximum monthly	Greatest daily	Year	Snow, Sleet	Precip. .10 inch or more	Temperatures								
	Daily Maximum	Daily Minimum	Record highest	Record lowest									Year	Greatest	Year	Greatest	Year	90° and above	32° and below	32° and below	0 and below
(a)	17	17	17	17	17	18	18	18	18	18	18	17	17	17	17	17					
Jan.	63.1	37.2	86	18	1937	3.09	3.03	3.03	1943	1937	6	0	0	0	0	0					
Feb.	63.3	37.5	85	20	1939	4.29	6.03	6.03	1937	1944	6	0	0	0	0	0					
Mar.	66.3	39.0	95	26	1942	3.78	2.50	2.50	1943	1938	5	*	0	0	0	0					
Apr.	69.5	42.3	95	28	1942	2.13	2.46	2.46	1940	1938	4	*	0	0	0	0					
May	75.1	45.8	102	32	1942	0.58	1.15	1.15	1955	1955	2	1	0	0	0	0					
Jun.	82.4	48.7	105	33	1944	0.12	0.53	0.53	1937	1937	0	0	0	0	0	0					
Jul.	90.7	55.6	109	37	1940	0.07	0.21	0.21	1937	1937	0	0	0	0	0	0					
Aug.	89.7	56.1	107	38	1941	0.19	1.25	1.25	1945	1945	0	0	0	0	0	0					
Sep.	88.1	53.7	110	33	1942	0.43	1.79	1.79	1939	1939	0	0	0	0	0	0					
Oct.	79.9	47.7	103	31	1935	0.81	1.24	1.24	1957	1957	0	0	0	0	0	0					
Nov.	73.2	41.7	92	26	1938	1.03	3.02	3.02	1944	1944	0	0	0	0	0	0					
Dec.	67.0	39.3	90	22	1954	3.30	4.43	4.43	1940	1940	0	0	0	0	0	0					
Year	75.7	45.4	110	18	1937	19.82	6.03	6.03	1937	1937	32	60	0	27	0	0					

(a) Average length of record, years.

T Trace, an amount too small to measure.

+ Also on earlier dates, months, or years.

* Less than one half.

** Base 65°F (Estimated).

Average Temperature (°F)

Year	Jan.	Feb.	Mar.	Apr.	May	June	July	Aug.	Sept.	Oct.	Nov.	Dec.	Ann'l
1935	---	52.7	49.6	57.4	59.4	66.0	72.8	75.0	71.0	62.2	55.0	53.4	---
1936	53.0	50.7	55.0	57.4	62.3	68.4	75.2	74.6	70.6	64.4	60.4	52.0	62.0
1937	40.7	49.0	57.8	55.1	60.2	64.6	72.6	73.8	73.4	66.2	56.7	54.4	59.9
1938	52.5	49.9	50.0	55.2	59.4	64.4	70.7	73.0	73.7	61.6	55.1	53.6	59.9
1939	48.2	43.8	50.7	57.2	58.9	64.2	70.2	72.4	69.4	61.8	57.6	55.5	59.2
1940	50.9	50.2	53.1	55.4	61.4	63.8	69.6	69.3	66.0	63.7	54.8	54.4	59.4
1941	48.2	51.0	51.6	51.5	61.5	61.0	69.8	67.5	62.0	59.5	56.5	48.2	57.2
1942	49.6	46.2	49.2	50.8	56.1	62.5	71.2	69.6	65.2	59.6	55.6	50.8	57.2
1943	48.6	50.2	50.6	53.2	60.0	61.8	68.6	69.6	71.3	61.6	57.5	48.0	58.4
1944	47.1	44.1	48.2	49.8	56.3	57.0	---	---	---	---	---	---	---
1952	---	---	---	---	---	---	---	---	---	68.8	54.2	50.8	---
1953	56.1	52.0	54.1	55.1	58.9	65.6	75.7	72.6	70.9	65.5	59.3	51.8	61.5
1954	48.7	57.3	51.5	58.4	62.3	66.6	77.6	71.4	72.4	65.5	60.9	52.2	62.0
1955	47.5	50.6	55.9	56.8	60.3	66.4	78.0	78.0	75.0	63.6	57.3	52.0	61.3
1956	52.2	47.4	55.3	55.7	63.2	69.6	71.0	71.0	76.8	61.6	60.6	54.1	61.8
1957	49.1	55.7	55.0	57.4	59.7	72.3	76.5	75.9	72.0	61.3	53.9	55.2	62.0
1958	52.3	54.7	51.6	59.2	65.8	68.1	72.0	76.6	75.1	70.1	58.2	60.6	63.7
1959	57.7	51.9	61.7	64.5	61.9	72.1	79.5	76.2	71.9	69.2	64.1	56.4	65.6
* 1960	50.0	51.7	59.2	62.0	65.6	73.0	79.8	75.6	77.8	65.7	57.3	53.4	64.3
Means	50.2	50.4	52.7	55.9	60.5	65.6	73.2	72.9	70.9	63.8	57.5	53.2	60.6

* Not included in averages.

Total Precipitation (Inches)

Year	Jan.	Feb.	Mar.	Apr.	May	June	July	Aug.	Sept.	Oct.	Nov.	Dec.	Ann'l
1935	4.05	5.10	3.01	2.24	0.23	0.0	T	0.82	0.95	0.21	0.22	1.34	18.17
1936	0.52	9.02	3.53	1.56	0.44	T	0.33	0.19	0	1.94	0.17	8.27	25.97
1937	5.30	11.66	4.84	1.27	1.05	0.54	0.21	T	0	0	0.19	2.22	27.28
1938	3.15	4.91	8.25	1.52	1.04	0	0.02	0.02	0	0.86	0.04	7.16	26.97
1939	3.60	3.28	2.87	0.85	0.29	0	T	0.02	4.91	0.91	0.78	0.77	18.28
1940	4.39	4.83	1.26	3.24	T	0	0	0	0.11	1.98	0.91	10.31	27.03
1941	1.78	4.76	8.66	8.01	0.62	0.05	0.12	0.08	0.50	3.19	1.45	4.70	33.92
1942	0.36	2.22	2.78	3.18	0.06	0	0	0	0	0.67	0.58	1.95	11.80
1943	6.82	2.51	4.72	3.35	0.11	0.45	0	0.01	0.06	0.72	0.05	5.51	24.31
1944	2.01	7.31	2.02	1.53	0.30	0.17	0	T	0	0.03	6.78	1.35	21.50
1945	0.76	3.86	6.88	0.49	0.07	0.34	0.04	1.98	0.80	0.15	0.75	8.25	24.37
1952	---	---	---	---	---	---	---	---	---	0	3.70	3.02	---
1953	1.13	1.50	1.98	1.25	0.91	T	0.04	0	0	0	0.96	0.24	8.01
1954	5.40	1.95	7.66	0.18	0.19	0.09	0.30	T	0	0	0.46	0.94	17.17
1955	4.29	1.96	0.80	0.47	2.52	0	0.11	0.16	0	0.03	1.07	1.81	13.22
1956	3.19	1.19	0	2.88	0.12	0	0.06	0	0	0.39	0	0.44	8.27
1957	7.18	0.82	1.46	1.59	2.13	0.43	0	0.02	0	3.86	0.91	1.72	20.12
1958	1.33	3.89	7.23	4.27	0.36	T	0	0.15	0.33	0.05	0.50	0.07	18.18
1959	0.35	6.39	0.03	0.47	0.02	0	T	T	T	0.36	0.07	2.60	10.27
* 1960	3.58	4.14	.66	2.01	.89	.00	.06	.0	.02	.20	2.22	Tr.	13.78
Means	3.09	4.29	3.78	2.13	0.58	0.12	0.07	0.19	0.43	0.81	1.03	3.30	19.82
Annual													19.82

* Not included in averages.

STATION HISTORY

The first Weather Bureau records for Alpine were taken between February 1, 1935, and August 31, 1945, by Harold L. Flegal, at his vineyard about $\frac{1}{4}$ mile southwest of the post-office. The elevation was given as 1900. The instruments for this station were furnished by the Chamber of Commerce. The more recent data used in this summary were obtained from a point $\frac{3}{4}$ mile west of the post-office at an elevation of 1700. The records at this location were started on October 2, 1952, by Ernest W. Wright and were continued to December 1958. Here the shelter was still the property of the Chamber of Commerce, but the thermometers and rain gage were furnished by the Weather Bureau.

Beginning in December 1958 the station has been operated by the Fire Department, with Robert Fey as the observer. The location is $\frac{1}{2}$ mile west of the postoffice at an elevation of 1735 feet.

There are also records

available from two other locations in the area. From May 1951 to Oct. 1952 observers were H.E. Aston and Marion C. Aston. Their station was about 1.2 miles north northeast of the postoffice, at 2260 feet. R.E. Gastil took observations from January 1950 to May 1951, but we have no information concerning the location and exposure of this station. Because of the higher elevation of the Aston station and doubt about the location of Gastil's we have not included these records in this summary. The wisdom of combining the Flegal and Wright records might be debated, but it has been done in order to provide a long enough record to make a useful summary.

Most of the Alpine records have been published currently in the California section of the Weather Bureau's Climatological Data. The original manuscript copies, for the most part, are on file in the Weather Bureau Office in San Francisco.

More about Alpine Climate from Page One.

during the summer would drop into the 30's most afternoons and rise to the 60's at night. Winter readings are somewhat higher. Occasionally very dry conditions are reported when east and northeast winds prevail over southern California. These situations may develop at any time, dropping humidities to 10% or lower, but they are most likely during the late fall or early winter months.

The prevailing wind direction is from the southwest, northwest and west winds are also quite common. While the average speed is probably quite light there may be occasional strong winds associated with thunderstorms or with the more widespread storms of winter. Also, the infrequent east winds may

at times reach great enough speeds to cause slight local damage.

The last 32° temperature of the spring occurs early in April, on the average, while the first freezing temperature in the fall can be expected near the end of November, giving the average length of the growing season of about 235 days.



SMALL TALK Cont. from 8

school grounds and returned him to her. They were all so happy to have him back.

Sunday when Cecile went over to Karen Jordan's to get eggs Mr. Jordan told her that their milk man had accidentally run over their little white dog Bobbie. Karen brought him with her from Azusa when they came to Alpine over 8 years ago. We all are so sorry about it.

Vonnie Kay Greathouse got her permanent down at Cuyamaca and it turned out real cute. She had only a little cut off too.

PTA Starts Drive

Alpine's annual PTA membership drive gets underway the first week in October reports Mrs. John Gault, chairman.

'Envelopes will be distributed to each student on Monday' she states. 'This is a cordial invitation for you to join our PTA whether you are a mother, father, teacher or one of the many civic minded adults of the community. America's children and youth depend on you. Give them an inspiring example of your strong and steadfast interest in their welfare by joining'.

Mr. and Mrs. Geo. F. Staub, a retired mechanical engineer who has built ships all over the world, has brought his big trailer with his wife to make their home at Alpine Oaks Mobil Estates.

J. H. McKie, Jr.

REALTOR

2355 HIGHWAY 80

P.O. Box 398 ALPINE, CALIF.

ELSIE HOFFMAN, ASSOCIATE

HICKORY 5-2217

Mrs. McGuffie on Feet

With the cast off her knee, and strong enough to be up at times, Mrs. Ralph McGuffie, who was critically injured recently in a car crash, is feeling a lot better, but must recline on a lounge most of the time.

Her daughter, Mrs. Jennie Knapp, who drive the car when a man rammed into it--for which he was cited--is feeling better 'but she also has a lot of aches and pains' says Agnes.

Their drugstore, 2363 Hwy 80, is closed for about another week 'so folks will have to pay their light and phone bills by mail till then', she adds.

A GENIUS IS ONE WHO IS EN-
DOWED WITH AN EXCESS OF
NERVOUS ENERGY AND SENSIBILITY.

Alpine's nearest bank



1402 EAST MAIN ST., EL CAJON
W. LEROY BOOTH, MANAGER



READY FOR GOOD TURN

Next Saturday Scouts will leave 'Good Turn for Goodwill' bags with folks to fill with surplus items and pickup will be the following Saturday. This is the 7th event. The first one in 1955 netted 52,000 pounds of things and last year it grew to 265,000 pounds!

Lutz's Garage

SERVING ALPINE & MT. EMPIRE

Complete Motor Service

24-HOUR TOWING

Front End Alignment

Wheel Balancing

Automatic Transmission

HAROLD, GEORGE & LARRY

H15-2967

Hwy 80 at Tavern Rd., Alpine

TAPPY'S MOTEL AS SEEN FROM THE SUN'S AIRPLANE, HWY 80 IN FOREGROUND. BUILDING AT RIGHT. HOUSES OFFICES OF RELCO, REALTORS AND BUILDERS, OF WHICH ROBERT TIPTON IS HEAD.

ALL ADS NOT IN TODAY

Whoops! If you think your ad was left out of this issue, you're wrong, for this is an extra one-third in September-- and as most of them have ordered but the two times a month, the Sun did not wish to bother all advertisers to see if they wanted in.

DEDICATE NEW PO

Postmaster Burnice C. Wellband invitex the public to attend dedication of Pine Valley's fine new edifice tomorrow at 2. It is one indication of growth and improvement in the back country.

EYES EXAMINED - BROKEN LENS REPLACED - VISUAL TRAINING

H. DUDLEY WINN, O. D.

HICKORY 4-6129

LOUIS M. WINN, O. D.

SINCE 1912

OPTOMETRISTS

120 REA AVE.

FIRST STREET NO. OF MAIN

EL CAJON, CALIF.

SMITTY AGAIN SERVES

Jack Smith, known to all Alpine as 'Smitty', 502 Arnold Way, former county building inspector in the back country, has resumed his water well pump and electrical repair service in this area. He lives here with his wife and family, was in the Navy in WW2, spent many months as a prisoner of war, is a pilot and flight instructor, keeps his plane at Gillespie Field. He is all ready again with truck, well rig and equipment.

Starts New Business

Kenneth Drennon, 2116 Tavern Road, who has lived here with his wife Leona and son Richard for the past year, has just opened Alpine Ready Mix Concrete, with office at 2538 Hwy 80. He has been 17 years in this line, at LA, SD and EC. He will serve Alpine and the back country with a quality line.

WEATHER EXTRA TODAY

MRS. CUNNINGHAM SURPRISED

Mrs. Ed Cunningham of the Willows was given a surprise birthday party by her son and his family, the Victor Cunninghams of Imperial Beach and her daughter and children, Mrs. R.W. Earnhard of EC on Sept. 17th. She reports a lovely time and enjoyed the evening so much.

In the middle fold you will find the second weather summary prepared by the US weather Bureau in cooperation with the Sun. The bureau sent up the figures for 1960, which are added hereon, asked for more copies as they had given all out. The Alpine C of C also ordered 500 to put in with their folder when people write for data on Alpine.

When Buying or Selling

Real Estate

Do So with Confidence

CALL

HUGH L. McGOY Co.

Realtors

Serving S.D. County 23 Years.

15949 Highway 80 Phone H15-2655 El Cajon

6808 El Cajon Blvd. Phone H06-0505 San Diego 15

Plan Grand Opening

Augie and Shirley Bittner who recently opened the Jolly Kone, 2442 Hwy 80, are planning on a grand opening shortly, they reveal. Jack Hoistad has just blacktopped the area, laid berm around and painted it black and white. 'Business has been increasing steadily since we opened' says Mrs. Bittner, who runs the popular place. They have moved up from Lakeside with their four youngsters, are deeply in love with Alpine.

Corky Jones, owner of Alpine Oaks Mobil Estates 3505 Hwy 80, has just gotten out some beautiful color postals made by Ralph Ames of Escondido, depicting its beauties, which go out to hundreds of trailerites.

Casino Inn

RED & ETHEL

COCKTAILS - SANDWICHES

GAMES - DANCING

10 AM TO 2 AM

1155 Hwy 80 HI5-9581

SERVING THE SAVER
AND HOME OWNER

The Specialized Job of Savings and Loan Associations

Funds Placed by the 10th
Earn from the 1st. Post-
age-Paid Save-by-Mail
Service. Each ac-
count insured to
\$10,000 by FSLIC.
Profitable and legal
investment for Pension
Funds, Corporations,
Credit Unions, Trusts, etc.

4 1/2%
Current Rate
Per Annum
**COMPUTED
MONTHLY & PAID
QUARTERLY**



JOHN A. DAVIS
President

LOANS TO BUY, BUILD OR MODERNIZE

* EL CAJON

* LA MESA

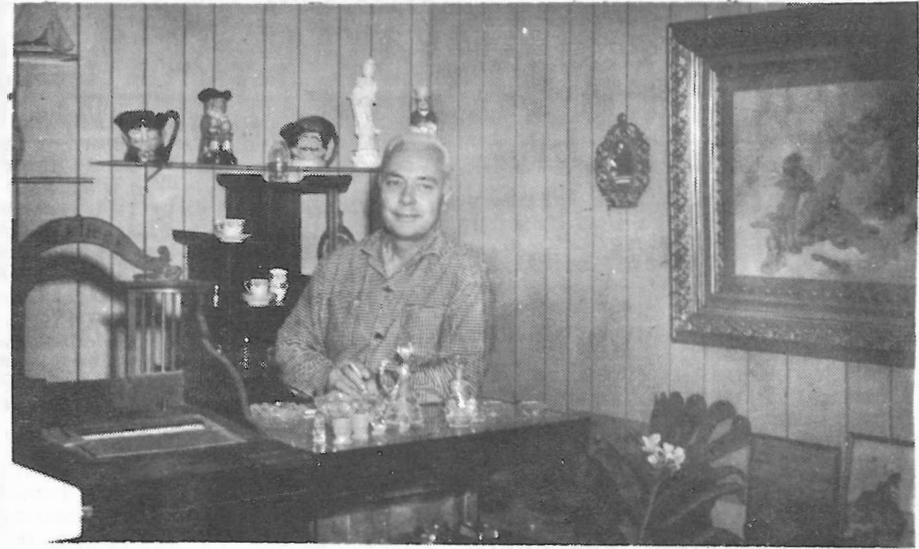
* LEMON GROVE

Rent Five Properties

Mrs. Charlene Brown reports rental of five properties. Jim Genalis of Imperial Valley has taken the studio apartment from Mr. and Mrs. Orville Drew on Marshall Road. Mr. and Mrs. Freeman Carr who came here from Pennsylvania with their daughter have rented the home of Harold Dodds in Descanso. Carr is a mechanic, works in EC.

Also coming to Alpine are Mr. and Mrs. Bruce McIntire and their four children. He is in the Navy and they are happy to be in the country, having moved from a Navy housing development. They rented the 4 bedroom home of Mr. and Mrs. Donald Cline, Rock Terrace. Mr. and Mrs. Carl F. Jackman sold their home in SD and with their son have moved into the Wallace Kent home, Homeward Way. The Kents have moved to Ramona where he is principal of the school. Mr. and Mrs. Mart Hazell, of Alpine Cafe have rented the cottage at 2241 Hwy 80, owned by the Bill Browns.

A GENTLEMAN'S FIRST CHARACTER-
ISTIC IS FINENESS OF NATURE.



ONE OF COUNTY'S MOST UNIQUE SHOPS IS IN ALPINE. 2549 HWY 80, WHERE C.W. MCNAUGHTON OPERATES CARRIAGE TRADE, WITH AN EXCLUSIVE SELECTION OF ANTIQUES AND GIFTS, PICTURED ABOVE. HE LIVES AT PT. LOMA, GROWS EXOTIC AND SOUTH SEA PLANTS AND FLOWERS, MOST OF THE TIME HIS SHOP HAS THE DELIGHTFUL FRAGRANCE OF GINGER, WHICH, TO ANYONE EVER HAVING VISITED HAWAII, INSTANTLY RECALLS HAPPY MOMENTS IN THE ISLES OF PARADISE.

PTA MEETS OCT. 10

Alpine's PTA meets Tuesday Oct. 10th at 7:30 in the auditorium announces Mrs. Robert Webb, president. It will be a get acquainted meeting with a pie social all evening.

A board meeting is scheduled for Oct. 3rd at 3 pm at Mrs. Webb's home, 1263 Alpine Heights Road.

BARBER STAYS WEEK ONLY

Just as he was getting a nice start with the re-opened Alpine Circle barbershop, Milo Edwards had to leave after only a week's business as his mother up north was taken suddenly ill. He sold his trailer and left hurriedly.

Mr. & Mrs. Roy McClinton, Flo Drive, are back from a three day trip visiting Buellton and surrounding areas.

Ralph McGuffie had to put down a new well, the old one just went dry. B & R of EC came up and drilled a 6 inch hole, securing a good supply.



HELEN THOMSEN'S
Cafe del Rey Moro

OPEN EVERY DAY
NOON TILL 8 PM
BE 4-2161

ACCOMMODATIONS FOR
LARGE AND SMALL
PARTIES AND BANQUETS

House of Hospitality
San Diego, California



BLUE ROCK AUTO SERVICE

WE GIVE S & H GREEN STAMPS

2151 Hwy 80 Opp. Postoffice

HI 5-2132

HOME STORY from page 1

for resale possibilities. A spokesman said further that everyone liked the fact that a home can be purchased for as little as \$40. a month, less than rent.

Present were executives from the institute for essential housing who are supervising local authorized builders such as Basic Homes. I.E.H. selects builders who can meet the high standards of service and workmanship required by the institute. IEH provides the builder with 100% financing, plans and materials.

IEH is the only organization in the country which provides three stages of construction: the basic home, the ready to live-in-home, and the finished one. Two of the stages of development are designed so that the buyer can select the home which best fits his pocketbook, and then can rely on additional financing when needed for completion of the home.

'Many were interested to know that an IEH home can be built anywhere: on rural land, farm land, or at lake or ocean side' Ridenour said. 'Land owners from difficult to build in areas such as Alpine, Ramona, Jacumba, Campo and Descanso, found that building in these areas is possible with the IEH plan'

IEH houses are not prefabricated, but are built from the ground up on a buyer's land and bonded roofs and good quality nationally advertised products are used throughout.

Bert Fuller, whose health was damaged when he was a POW in the Philippines during WW2, has recovered from a siege of the flu, complicated by the old malaria fever from which he suffered over there.

WATER STORY from page 1

growing deficiency of rainfall for 17 years. Last winter showed the second driest in 151 years of recorded weather in SD County. The earth and its vegetation are more arid than ever.

'When the water system is done it will cover 33,000 acres with 13 miles of main lines serving over 7000 residents in Alpine, Dehesa, Harbison Canyon, Mt. Top, Flinn Springs. Calibre of the system is for an ultimate 130,000 residents which may take 50 years' says Chas. C. Price, general manager.

Voters in the areas passed a \$3 million bond issue, \$2.4 million having been sold to Nuveen of Chicago at 4.69% interest, to run 30 years. Already contracts for \$1,630,949 have been let to seven supply and construction firms. This week Price sent out letters to those having signified desire for service, and payments will start early next month to insure feeder lines going to the areas wanting water.

Mrs. Sally Fitzgerald, former Alpiner, now of LM, is spending part of her time at the Hilltop Inn, 1332 La Cresta Blvd., which her late husband Frank, had recently purchased.

Mrs. Katherine Black has just drilled down to 300 feet in the well that supplies her Tappy's Motel, secured a good supply which she hopes will last till water gets here.

Phillip Hall and wife bought a new car, took three weeks off, visited northern California, are now back on duty at the PO.

ALL ARE NOT SAINTS THAT GO TO CHURCH.

CLASSIFIED

30¢ PER LINE PER TIME. CASH ONLY. COUNT SIX WORDS TO EACH LINE. MAIL TO THE SUN, ALPINE, CALIF. CASH. CHECK. COIN OR STAMPS O.K.

FOR SALE, MISCELLANEOUS

DINETTE SET OAK, EXTENSION AND FOUR CHAIRS. MAHOG. DROP LEAF. EXTENSION. HI 5-3606.

LOVELY MALE SIAMESE KITTEN. PAPERS AVAILABLE. JIM MADSEN. END OF ALPINE HEIGHTS ROAD.

NEW OLYMPIA TYPEWRITERS. PORTABLE & STANDARD. \$74.50 & UP. TERMS. FISHER. 4362 UNIVERSITY AT 4-4786.

SIAMESE KITTENS, FEMALE. SEAL POINT, BEAUTIFUL, REASONABLE. HI 5-3600.

FOR RENT

ONE BEDROOM HOUSE, PARTLY FURN. 2131 TAVERN RD. HI 5-2965.

FOR RENT, 1-BR APT. FURNISHED. CLOSE TO WILLOWS, REASONABLE. HI 5-2770. (9-29).

FOR RENT, MODERN 2 BR HOUSE DOWNTOWN ALPINE. RUGS & DRAPES. HI 5-2423. (9-29)

FOR RENT, FURN. SMALL APT. ALL UTILITIES FURN. \$45. HI 5-3386. EVENINGS ONLY. (9-29)

HOMES FOR SALE

FREE HOME IF YOU BUY ONE ON 3-ACRES. HWY 80. DON BATES. HI 5-2537. (TF)

GOOD BUY
ROCKS & ROCK SHOP
HIWAY 80, 137 FEET FRONTAGE X 588 FEET. 2 GOOD HOUSES. 2 WELLS, PRETTY WATERFALL. GOOD BUSINESS LOCATION. 1/2 MILE W. OF ALPINE, 1849 HIWAY 80. LOOK FOR WAGON WHEELS... SEE OWNER.

LISTINGS NEEDED

ALPINE VICINITY. LOTS OF DEMAND NOW FOR EXCHANGES. CALL US AT ONCE. BILL LAUGHLIN REALTY. 375 BROADWAY, EL CAJON. HI 2-9216

MONEY TO LOAN

EL CAJON FINANCE COMPANY
157 No. MAGNOLIA, EC. HI 2-1651

SPECIAL NOTICES

RUTH BURDETT, PIANO LESSONS
HI 5-2877

ELIZABETH CREGHE- PIANO INSTRUCTION. ADULTS & ADVANCED STUDENTS ONLY. HI 5-2185.

LET MAC HAUL YOUR RUBBISH AND GARBAGE. HI 5-3106.

ALPINE CLEANERS & U-WASH
2223 HWY 80. CALL HI 5-2242 FOR FREE PIC-UP & DELIVERY. EXPERT CLEANING, PRESSING & FINISHED LAUNDRY SERVICE.

ALPINE COTTAGE BEAUTY SHOP, 2864 E. VICTORIA DR. HI 5-2192. (TF)

24 HOUR DAY & NIGH, 7 DAYS A WEEK TELEPHONE ANSWERING SERVICE. PROF. PERSONAL ATTENTION. YOUR PHONE OR MINE, ALSO WAKE-UP SERVICE. HI 4-5233 (TF).

SALESMEN OR WOMEN FOR FAST GROWING ORGANIZATION. H.A. WHITING. HI 2-8255. (9-30)

WATER WELL PUMP SERVICE AND ELECTRICAL REPAIRS. SMITTY.. HI 5-2880. ALPINE (TF)

SPECIAL INSTRUCTION

COLLEGE MATHS
French Spanish
German Russian
F. SCHEEFHALS
HI 5-3756 FRI. SAT. SUN. MON
GL 4-5917 MON. TUES. WED. THURS.

NEW HOME CONSTRUCTION

3 B.R. Home Complete
\$45 DOWN - \$58 PER MO.

On Your Lot
Rural Property Included
HA. O-4314 OR HI 5-2149.

WANTED BY SEMI-INVALID BACHELOR, SOMEONE TO HOUSE CLEAN AND ODD CHORES ABOUT TWO HOURS PER DAY TWO DAYS PER WEEK. YOUR CHOICE OF HOURS AND DAYS. NO COOKING. HI 5-3138 BETWEEN NOON AND 3 O' CLOCK.

Alpine's Fine Weather

FROM OFFICIAL US STATION HERE

HIGH. 93. AVE. HIGH. 77

LOW. 45. AVE. LOW. 53

RAIN. .03. SEASON .39

ELEV. 2000 FT. POPULATION 3258

WHERE THE SUNSHINE SPENDS THE YEAR

NOW!

The Attractive Remodeled
Tappy's Motel

Completely Modernized

Redecorated and Comfortably Furnished

*WITH***Wall-to-Wall Carpeting****Panelray Heat****Ample Parking****Pure Deep Well Water***Monthly Tenants Receive Cleaning Service***From \$5 Up****Reasonable Weekly & Monthly Rates****Close In****Mrs. Katherine Black, Owner****2337 Hwy 80****HI5-2954**